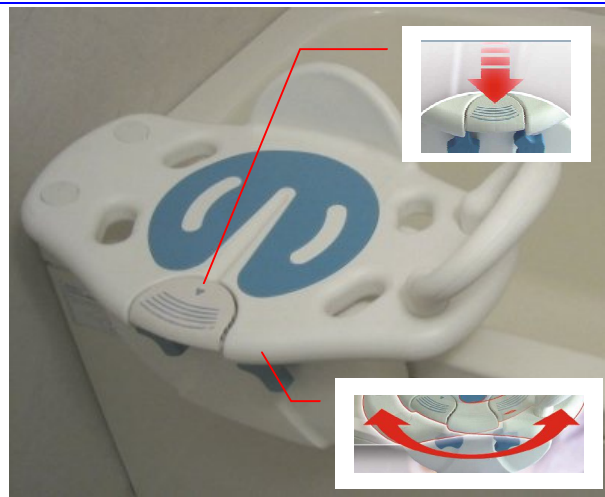


12301 SWIVEL TUB SEAT

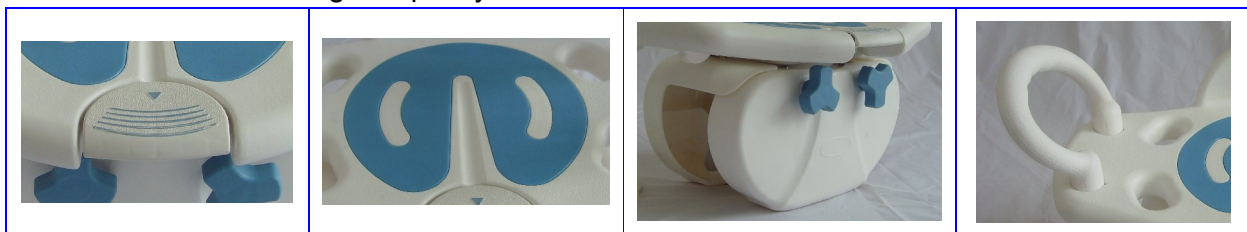
INSTRUCTION SHEET

A rotatable and position-able bathing seat helping users to enter and exit the bathtub. Safer and easier.

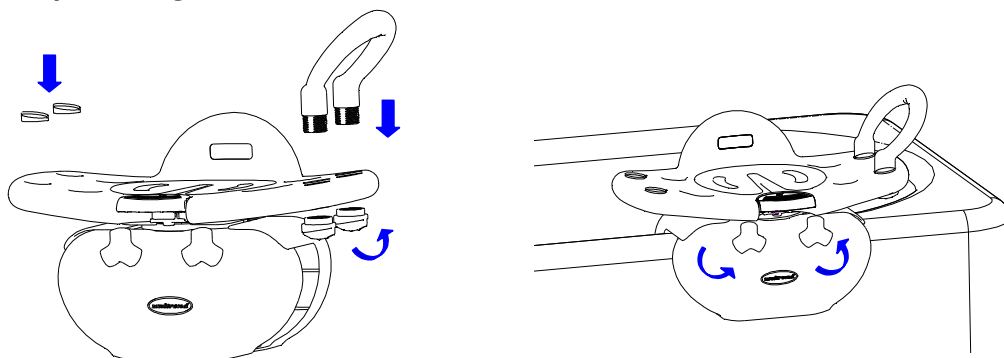


FEATURES:

- * Multi-functional unit with a tub bar, a shower chair and swivel seat as one
- * Swivel seat with 90-degree position locks at each cardinal point, every right angle.
- * 2 separate clamps hold firmly to bathtubs with sloped inner walls (metal or fiberglass)
- * Non-slip central seat pad and soft under-covers
- * Tool-free installation. Less than 3 minutes start to finish.
- * 250 lbs maximum weight capacity.

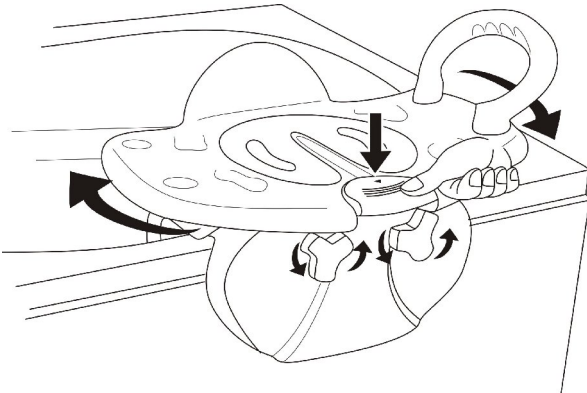
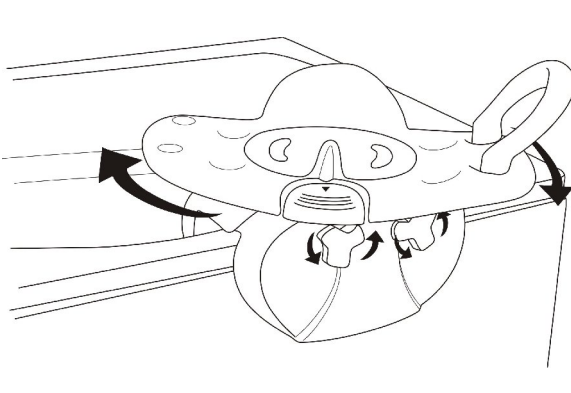
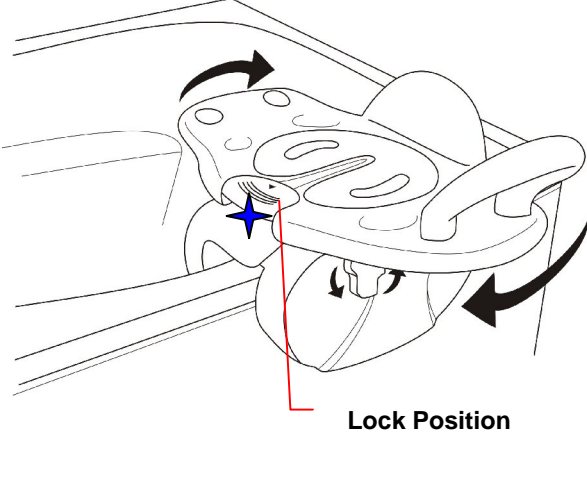
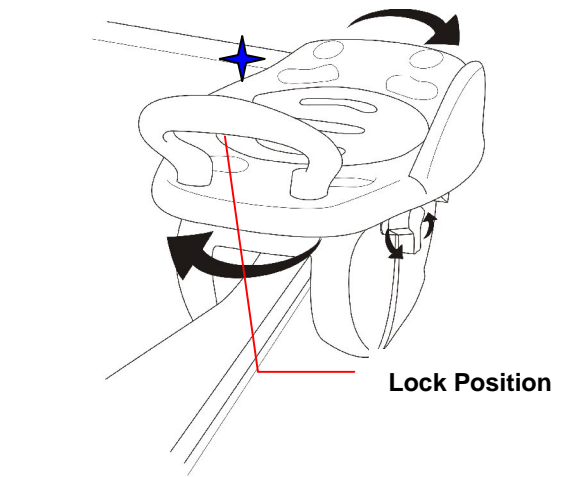


ASSEMBLY / FITTING:



1. Remove the tub bar from the package.
2. Select one end for tub bar handle assembly, tighten the plastic fittings, and cover up the holes with the small lids on the other end.
3. Loosen the gripping device. Place the tub bar upright on the top of the tub wall and tighten the gripping device, but DO NOT over tighten.

OPERATION:

	
<p>1. Sit down, one hand holding the tub bar. 2. Push down the front button and swivel the seat</p>	<p>3. Turn around to the right or left side 4. Release the front button</p>
 <p style="text-align: center;">Lock Position</p>	 <p style="text-align: center;">Lock Position</p>
<p>5. Position lock at right angle automatically 6. Move your legs into the bath tub</p>	<p>7. Push button again and turn around 8. Grip the tub bar and move your body slowly into the bathtub.</p>

WARNING:

- ▲ **DO NOT** install this equipment without first reading and understanding this instruction sheet
- ▲ **ALWAYS** check the bath seat for proper tightness before using.
- ▲ **Hold** the tub bar securely when turning around the seat, entering or exiting the bathtub.
- ▲ **ALWAYS** verify that the device is secure prior to use.
- ▲ **Ensure** that inside and outside area of tub wall where bath seat will be placed is clean and dry. Otherwise, the bath seat may not be securely installed to the tub and may cause injury to the user.